

**Micro Common Facility Centres  
(MCFCs) :**

MCFCs were suggested by Prof. Rao during the UNDP project to introduce tool kits and Small Machines developed at IDC with a proper context. This idea was accepted by DC (H) . Consequently 18 MCFCs were sanctioned for N.E. Since the concept was new 3 were taken up by IDC for trial implementation.

MCFCs are small village units which may or may not have electric supply. A typical unit is to cater to the needs of 15 to 25 artisans. A work shed was to be provided by N.G.Os, entrepreneurs or state governments. The tools, Small machines and Technology and Training was provided by D.C. (H) through IDC.

3 MCFCs were taken up at Dizehephe (Nagaland), Nalchar (Tripura) and Barapeta (Assam) supported by N.H.H.D.C., Poorbasha and SaptaShree (a private entrepreneur) respectively.

The concept of MCFCs as given in the next pages, was circulated to concerned officials and the Societies running the MCFCs. Visits were made by Prof. Rao to each of these places to explain the groups what it means to have an MCFC, as the concept was new.

## Cocept Document for MCFCS

M.C.F.Cs are conceived to cater to the needs of bamboo craft persons in the remote villages. Each MCFC will have hand-operated machines, Hand Tools, Jigs and Fixtures as well as a Smoke-chamber for collective use of around 15 craft persons who could form a Cooperative Society. The number can increase with proper planning of the utilization of facilities.

A model lay out for the facilities is suggested. However, the facility can be built into existing 'structures' with proper planning and modifications.

M.C.F.Cs need to be seen as instruments to induct new culture of upgrading bamboo and cane craft on a self-sustaining basis. They will become organizing units for bamboo craft to compete with the industrial products in the global markets. M.C.F.Cs can become "windows" to the out side world for the craftpersons in remote villages to recieve Design, Technology, Training and Marketing inputs on a continuous basis. In due course they will be 'profit' making units, able to hire all such Services.

Each M.C.F.C. can specialize in a product line to capture a market-share. A 'design strategy' based on strengths and weakness of particular group is essential for such achievement.

M.C.F.Cs can become centres to procure orders and new designs. They can stock components of products in other materials like jute, brass, powder-coated steel for the use of crafts persons. Availability of such components and materials which are not

readily available in the local markets, will become a major factor to compete in the Urban Markets. Products from each MCFC can go with a 'brand mark' ensuring certain standard of quality and reliability to ensure continuous orders.

M.C.F.Cs can also become experimental grounds for introduction of distant education in bamboo craft.

For the success of M.C.F.Cs, an integrated approach is essential.

### **1.0. Various facilities which will be given to each M.C.F.C.**

#### **1.1 Hand operated Machines**

Two sets of Four Hand operated Machines will be given to each M.C.F.CS.

1.1.1 Hand operated Splitting Machine

1.1.2 Width Sizing Machine

1.1.3. Thickness Sizing Machine

1.1.4 Hand operated Sander

#### **1.2 Hand operated Drilling Machine**

A hand operated bench drill with 2 speeds.

#### **1.3. Tool Kits**

Tool kit has 33 items in a special bag. Two of this will be given to each M.C.F.C.

**Tool Kit items:**

- |                      |                          |
|----------------------|--------------------------|
| Adjustable Hacksaw   | Jig Plane                |
| Foldable Pruning Saw | Machete                  |
| Mini Hack Saw.       | IDC Multipurpose Knife   |
| Key Hole Saw         | IDC Fine Splitting Knife |
| .Hand Drill          | IDC Width Sizer          |
| Hammer.              | Pruning Scissors         |
| IDC Piercing Tool    | IDC Gauge                |
| Rim Binding Needle   | Inside Calipers          |
| Fevicol              | Outside Calipers         |
| Small Box            | Steel Rule               |
| .Templates           | Measuring Tape           |
| Compass              | Sand Paper pad           |
| IDC weaving Tool     | Sand Paper file          |
| Propping Knife       | Needle files             |
| Work Board           | Chisel Edged Rasp File   |
| Sitting Mat          | Emery Stones             |
| Half Round Scrapper  |                          |

**1.4. Additional Tools**

5 other tools which have specific use for the cluster.

**1.5.Vices: Two bench vices.**

**1.6.Work bench:**

Two work benches of 1'x4' and 4'x4' will be given on which all the machines and vices will be mounted as shown in the plan.

**1.7.A small Cup Board for Tools**

A small cup board to store tools and components required for the craft persons.

**1.8.Jigs and Fixtures**

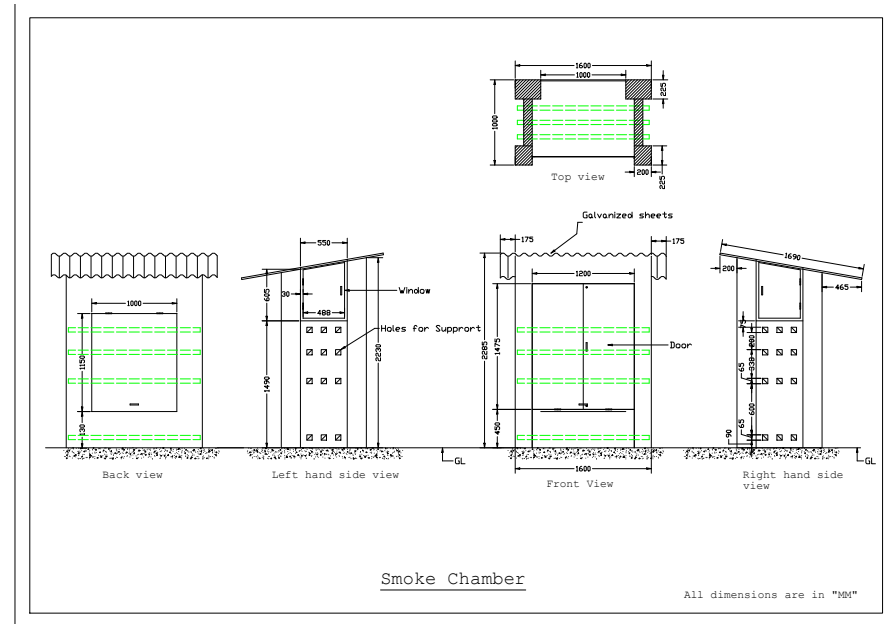
General jigs and fixtures for making rims of baskets will be provided.

Product specific jigs for specific products will also be provided.

**1.9.Smoke chamber**

A smoke chamber to smoke baskets will be given.

Model Smoke Chamber has overall dimension of 3'x4'x6½ built in brick. Fuel is put in the pit at the bottom. 4'x3'x4'. i.e. 48 cu.ft. is provided for smoking. Racks inside will facilitate keeping of bamboo items.

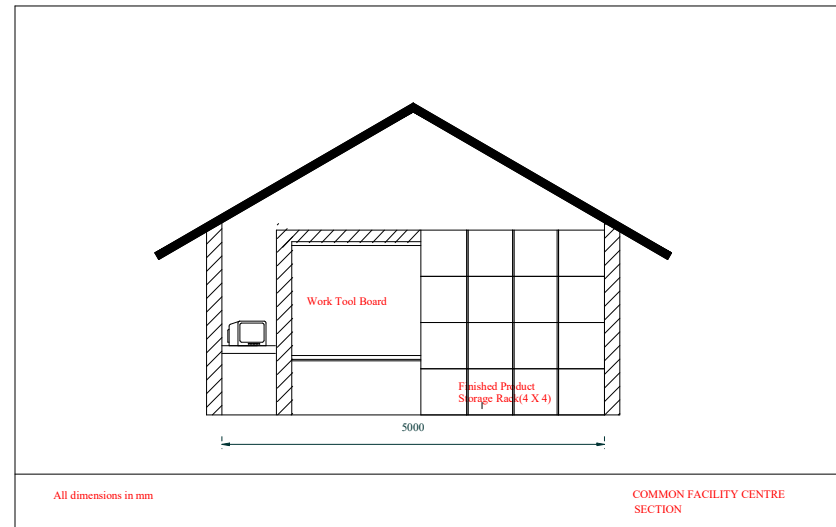
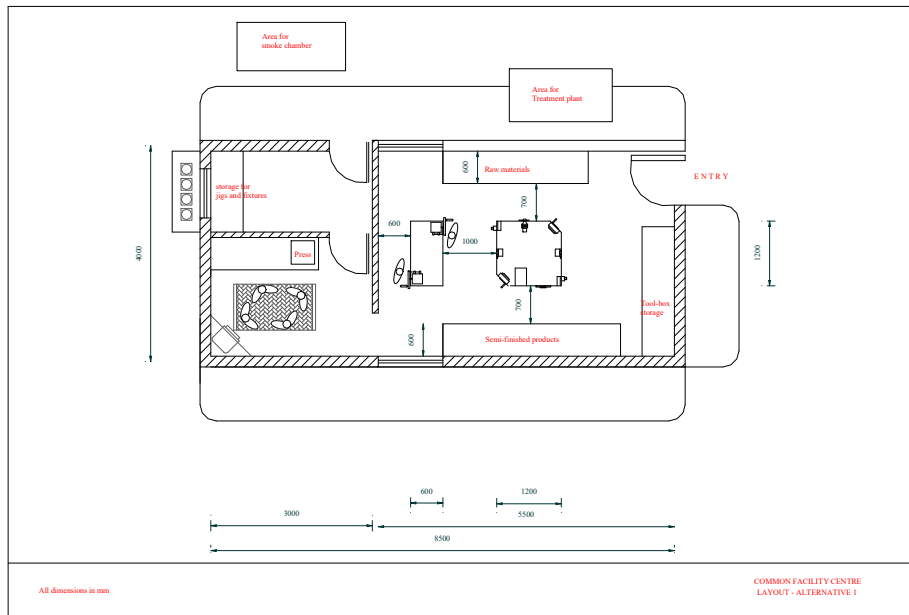


## 2.0. Facilities to be provided by local Govt., N.G.Os or Craft Societies.

### 2.1.Space, Shed

A model lay out with 15'x30' covered area is suggested as shown in the plan. It can house '8' craftpersons working on machines, '8' persons weaving and 4 to 5 persons making rims and finishing. Spaces for semi-finished and finished material are given. Bamboo treatment, dyeing and smoking will be done out side the shed.

lay out plan for MCFC



Cross sectional view for MCFC with storage space for finished goods

1½' x 1½' x 1½' carton boxes will be used by each craft person to store each day's produce. 15 to 18 such boxes can be kept in the area provided for the purpose. Simple racks are adequate to keep the boxes. Drinking water, toilet facilities need to be provided though not indicated in the lay out.

## **2.2. Water and Electric supply**

Electric supply is not essential as all the machines are hand operated. Where electricity is available it is handy for better lighting and adding power operated tools later.

Normal water availability is enough for natural dye finishes and even treatment.

## **2.3.Raw material storage**

Large raw material storage is not anticipated as each craft person can bring or handle their own raw material. If needed they can develop storage facility out side the shed.

## **2.4.Transport**

Access to transport will be an asset to take out the finished goods for out side marketing.

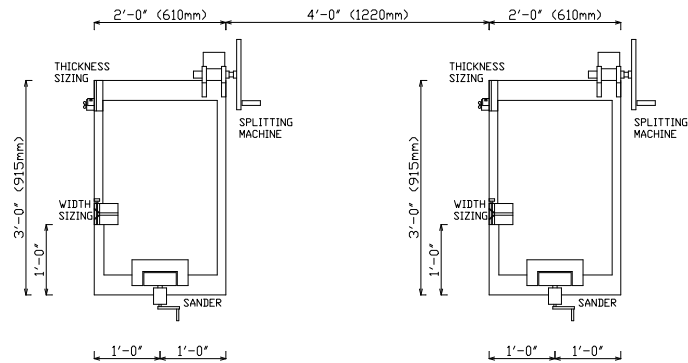
## **3.0.Design and Training facilities:**

Design and Training facility will be given to M.C.F.Cs under different schemes of U.N.D.P. through D.C. (H), C.B.T.C. and IDC, IIT Mumbai.

### Lay out for work-tables with machines

A lay-out plan for two tables with machines is suggested. However the lay outs can be worked out as per the local convenience. Care in planning needs to be taken to provide a free flow of raw material as well as people.

A table of minimum size is also suggested. If space is available a bigger table can be used as it can give more stability while operating the machines.

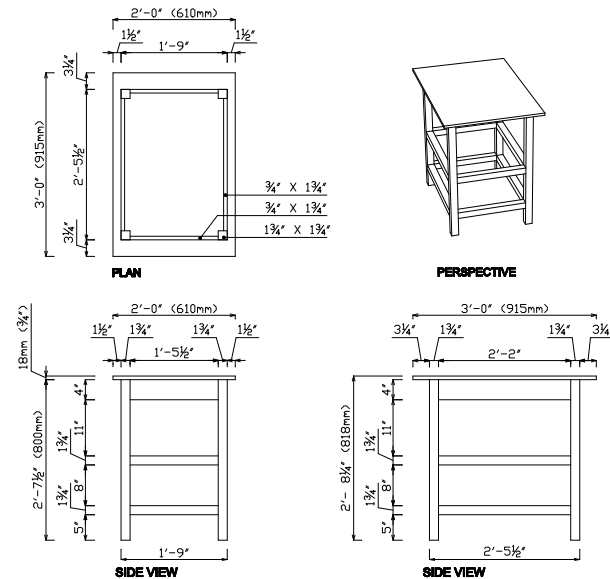


PLAN

SMALL MACHINES WORKTABLE FOR THE MICRO-COMMON FACILITY CENTRE

BAMBU STUDIO  
IDC, IIT BOMBAY

Table



PLAN

PERSPECTIVE

SIDE VIEW

SIDE VIEW

SMALL MACHINES WORKTABLE FOR THE MICRO-COMMON FACILITY CENTRE

BAMBU STUDIO  
IDC, IIT BOMBAY

**MCFC at Diezhephe (Nagaland)**

Diezhephe is a newly formed village with the settlers who came out of insurgent groups. A Common Facility Centre was already built under Nagaland Handloom and Handicrafts Corporation (NHHDC) grant for woodwork. The suggestion for MCFC came from NHHDC due to the infrastructure which was already available. This village is only around 20 km from Dimapur by road.

Craftspersons at Diezhephe were working only in wood. Bamboo was an additional new venture though most of the Naga craftpersons know bamboo weaving. The chairman of the Diezhephe Craft Society is a dynamic person. All the persons were warm, friendly and had lot of respect for Ms. Hekali Zhimomi, Managing Director (M.D.) of NHHDC. Having a dynamic officer at the helm of NHHDC helped in setting up MCFC.



prof. Rao with the craft group



Chairman of Diezhephe





Diezhephe workshop. Sunder and rudrapal working with the group

### Social Response

M.C.F.C. became a focal point for creating faith in Bamboo Craft and Bamboo products at Diezhephe, as there is need for bringing value to the declining traditional culture.

Prof. Rao made visits to Jalokhi, Moccockchung, Khonoma, Wokha and Lakhoti villages. Ms. Hekali Zhimmi, M.D. of NHHDC accompanied to some of these places. Large gatherings at each of these places were shown the new tool kit with demonstration.

One-day workshops were also held at Dimapur for the local craft persons. Local newspapers highlighted the efforts on bamboo craft and Future possibilities. N.H.H.D.C. has been selling the 'coil technique' bowls made by one entrepreneur at Jaloki. Diezhephe group has been locally marketing the bowls and plates.

The M.C.F.C. has also paved the way for increased acceptance and demand for new tool kits which are distributed by D.C. (H). It has also resulted in increased interactions of I.D.C. with N.H.H.D.C. 3 M.Des Students spent one month in Dimapur and Dizehephe in 2002 and one student spent one month in Dimapur in 2003 as part of their training where they assist local design efforts.



### Design Approach

A new design approach was taken for Diezhephe by introducing bamboo and wood combination products. A coil technique bowl was initially developed at IDC and introduced. Later after looking at the Naga traditional bowls, a combination of wood bottom with Naga Carving was incorporated. Thus the new 'Naga bowl' saves lot of wood as a big log need not be chipped off, for making a bowl. Bamboo combination with coil technique replaces major part of the wood in addition to providing a new look. The bottom wood part and the wooden lid make the bowl a value added item which has an urban market potential.

Coil technique plates were also introduced at Diezhephe. A new basket with a wooden base was another new introduction. Naga craft products are known for 'good quality and high cost'. It is important to keep the high quality as the local carving skills and cultural identity have a value in the local as well as urban markets out side. The products need to be marketed as high end products.



simple bamboo bowl in coil technique

a craftsman carving the bottom of Naga bowl



finishing the bowl



Naga Bowl





tray with 3D weave was introduced at Dizhephe

Diezhephe unit already had power supply and 5 to 6 power operated machines like lathe and sander.

The following Tools and Machines were given to the Unit.

Tables were financed as they were made by them.

A Smoke Chamber of their own adoption was built as Nagas have a tradition of smoking baskets at their homes.

**Tools/Goods given to Diezhephe :**

Item	Qty.
1.Tool Kits	2 nos.
2.Splitting Machine	2 nos.
3.Width Sizer	2 nos.
4.Thickness sizer	2 nos.
5.Sander with Table	2 nos.
6.Strip Roller	1 no.
7.Hand Grinder	1 no.
8.Photo Cutter	1 no.
9.Hole Saw	2 sets
10.File Frame Jigs	2 sets
11.Flower Basket Moulds	2 nos.
12.Knock Down Mould	2 nos.
13.Bowl Mould	1 no.
14.Oval Tray Mould	2 nos.
15.Round Stick Making Tool	1 no.
16.Elliptical Jigs (Small acrylic tray)	1 no.
17.Circular jigs	1 no.
18.Drill Bit Set	1 no.
19.File set	1 no.
20.Needle File Set	1 no.
21.Helliex Small Drilling Tool	1 no.



Bamboo container with Naga motifs





Rudrapal showing a detail to Mr. Puroh

young craftsman learning coil technique

**Training:**

Training workshops of week-long duration were held twice at Diezhphe. 4 persons were called to Mumbai for week-long workshops where they were trained along with craft persons from Assam and Tripura, Kerala, Gujarat and Maharashtra. Along with Diezhphe Craft persons, 4 entrepreneurs from Nagaland were called to the workshops at IIT, Mumbai for training with the help of NHHDC. These entrepreneurs came with their own expenditure. The combination of 2 craft persons and two entrepreneur craft persons each time made travelling and reaching Mumbai easy for the craftsmen. The exposure to Urban Markets and small Industries at Mumbai were rewarding experiences to the craft persons. The entrepreneurs also were helped to purchase the tools of right quality at the Bombay market.

Mr. Alan trying IDCSander at workshop held at IDC

Mr. Puroh and others at IDC workshop



**M.C.F.C. at Barapeta (Assam) :**

M.C.F.C. at Barapeta was located at 'Sapthashree Handicrafts' belonging to a local entrepreneur.

The entrepreneur employs 7 to 8 persons.

The unit also caters to many villages around as the unit 'acquires' products from them and supplies to NEHHDC.

'Sapthashree Handicrafts' has been a supplier of various bamboo products like lamps, trays to NEHHDC for long time.

Several 'design inputs' in the past have been given to the unit through D.C. (H) design schemes. The unit had enough space for M.C.F.C. Incidentally a Common Facility Centre by D.C. (H) was also started at the unit. A smoke chamber was built by Saptharshee as per IDC design.

Smoke chamber built being modified as per requirement







### New Designs

Products with Coil Technique had a strong impact on the craft persons. The craftsmen adopted the technique and developed new designs of their own like elliptical tray with the cane weaving (introduced by IDC based on Khonoma weave) for the handles. Other products being made by the unit were also studied. Design improvements were suggested for easy manufacture and better finish using the new tools and machines given to the unit.





Rudrapal showing the rim making

### Training

A week-long workshop was held at 'Sapthashree' premises in which several craft persons participated. Mr. Pradeep Babar, A.D. at D.C. (H) office in Guwahati was also present on the Inaugural day of the workshop.

Rim finishing being demonstrated



Craft persons were trained in the use of tool kit as well as Small Machines. Coil Technique was introduced to the group. 2 persons from Sapthashree attended a week-long workshop in Mumbai. '2' persons missed the first workshop as they cancelled their trip in the last minute because they were asked by the NEHHDC officials to attend a 'Market meet' at the same time.

Haldar demonstrating treatment of bamboo



The craft persons in general at Barapeta use 'Gamaxin' for treating bamboo. **Gamaxin is a banned item now all over the world as it does not 'bio-degrade'.** Borax, Boric acid treatment was introduced to the group. The coil technique bowls are being made and sold in the local market by Sapthashree. Mr. Mohibul Hussain, the owner-craftsman who attended workshop at Mumbai is very enterprising and is 'training' other craft persons in coil technique for NEHHDC after attending the IDC workshop.



Haladar telling how to use the gauge

Craft persons were trained in the use of tools and machines



craft persons trying the splitting machine



Ali cutting with pruning saw

Sundar explaining a point to Ali





### M.C.F.C. at Nalchar (Tripura) :

The M.C.F.C. at Nalchar was taken with the suggestion of D.C. (H) and Parbasha (State Govt.) An existing Society at Nalchar which had a building was identified. Prof. Rao visited the place initially and suggested expansion of space as MCFC needs open space to work. As the current building was built as storehouse there is no ventilation in the unit.

A meeting was held with Mr. Battacharjee, Director, Industries who promised that the bigger place will be built, as an extension of the existing unit.

However, no progress was made after 6 months.

Mr. Bhattacharjee had retired and the new person was not aware of the promise. Since the project had a limited time frame, Tool kits and Machines were sent to Tripura. A workshop was planned. Unfortunately the workshop was called off at the last moment due to insistant demand from D.C. (H), as new B.C.D.I. programme was being inaugurated by N.I.D. few days after the workshop. The craftsman who had already reached Kolkata was called back.

M.C.F.C. at Tripura got slight set back due to the above reasons and the volatile, uncondusive situations during local election which limits the 'timing' for holding the workshops.

However the required tables for the machines were made. Tool kits, small machines and other tools were given to the Women's Society at Nalchar.

### Tools/Goods given to Nalchar Women Hasta Kala Silpa Sabha Samiti Ltd., Nalchar Tripura (W) :

Description	Qty.
1. Splitting Machine	2 nos.
2. Width Sizer	2 nos.
3. Thickness Sizer	2 nos.
4. Sander with Stand	2 nos.
5. Tool Kits	2 nos.
6. Spanner	1 no.
7. Screw Driver	1 no.
8. Rubber Blocks	4 nos.
9. Emery Paper for Sander	4 nos.
10. Hand Grinder	1 no.
11. SR 998	100 Gms
12. Tray Moulds (Round, Oval, Square)	1 set each
13. Product Specific Tools	1 set
14. Strip Cutter	1 no.
15. 4mm Marker	1 no.
16. Mould for Gift Basket	1 no.
17. Mould for Gift Basket Rim	1 no.
18. Paper Basket Rim Mould	1 no.
19. File Cover Styrene Jigs	1 set
20. Acrylic Sheet	2 nos.





Mr. .M.L.Das



An instructor at BCDI

Master Craftsman Krishnadas pal



#### Training workshop at BCDI, Agartala

A 2-day workshop was held at B.C.D.I. on tools and small machines in which local craftpersons, B.C.D.I. instructors, B.C.D.I. Students attended the workshop.

Mr. M.L. Das, Director of Industries inaugurated the workshop.

A full set of Tools, and a set of Machines were given to B.C.D.I. to be used in their Training programme. N.I.D. Faculty who have undertaken the training programme of B.C.D.I. were also present in the workshop and extended their support in visual presentations. Mr. Pulaha Dasgupta gave a brief introduction of the N.I.D. work.

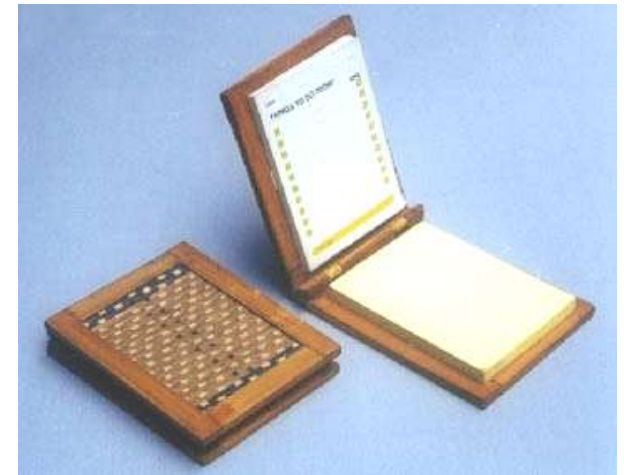
**New Designs**

Tripura has the highest potential for adopting the new designs. The small basket with lid, newspaper basket, Note pad, File cover were introduced. Coil technique was also introduced.



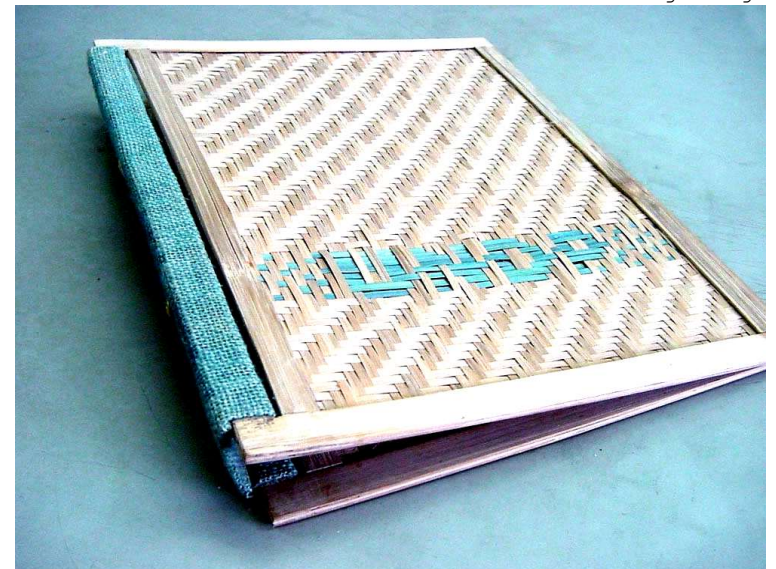
News paper basket with different hangers

Tripura basket with lids



Note pad

File cover with jute hinge





M.C.F.C. at Nalchar

prof. Rao explaining the group



Craft person trying width sizer

Workshop at Nalchar

A week long workshop was held in Nalchar in which several craft persons attended from Nalchar. They were trained in the use of Tool Kit and Machines.



Two Persons from Tripura were also trained at Mumbai for a week in use of Tools and Machines.

learning the use of splitting machine



Rudrapal demonstrating coil technique



## Conclusion

Both phase 1 and phase 2 of the project, 'Tools ,Technologies and Finishes ' have been successfully completed.

Setting up three Micro Common Facility Centres in North East has also been completed.

550 tool kits have been made and supplied.

60 sets of small machines have been made and supplied.

Three manuals on use of tools, Small machines and Finishes in addition to a general brochure have been brought out.

Technology Transfer for manufacturing tool kits and Small machines has been done successfully.

Two small manufacturers are making and Supplying Tool kits as well as Small machines at Mumbai .

8 Cane tools have been developed. 10 sets have been made and supplied after validating them.

MCFCs were assisted in Technology and Designs. Training in using the tools and small machines was given. New product designs and supporting technologies like moulds, jigs and special tools were also given to each of the MCFCS .

Continuation of work with these MCFCs and setting up new MCFCs are being handled by DC (H) officials now.

Tools, small machines and finishes developed have made an impact judging from the continuous requests received by Bambu Studio of IDC for conducting workshops as well as setting up MCFCS. Continuous queries for supply of tool kits and small machines have also been coming from individuals as well as various agencies.

The details of the workshops conducted along with names and addresses of craftpersons who attended are given in the annexures.

**'Get up' Programme**
**Day - 1**

9.00 to 10.00 -	Inauguration	S.P.Sarma,M.D.-NRFDI
10.00 to 11.00	-Importance of product get-up. Products from Indonesia, Thailand, Costa Rica, China & Japan. Use of Tools, Machines & finishes. Bamboo Products, Tools & Machines developed at IDC.	- Slide + Video talk - A.G. Rao
11.00 to 11.15	Tea	
11.15 to 12.00	Demonstration of  · Splitting Machine · Width sizing Machine · Thickness sizing Machine · Sanders · Hand Tools	- Rudrapaul (Craftsman)  Avinash ( Designer )
12.00 to 1.00	Participatory Workshop	- A.G. Rao Sukumar M.S.G.Rajan
Lunch		
2.00 to 3.00	Demo of Natural Dye Colouring	- Rudrapaul
3.00 to 4.00	Practice Session in small groups on tools and machines	- Avinash Rudrapaul
4.00 to 5.00	Tool sharpening, Hardening, Machine maintenance	- M.S.G.Rajan A.K.Das

<b>Day - 2</b>	9.00 to 10.00	Design Translation : Making to size, Drawing, measuring, marking Use of gauges	-	A. G.Rao Sukumar Avinash
	10.00 to 11.30	Introduction to Tool kit/work station, Product Specific tools, Demo. of frame based products + Video		Avinash Rudrapaul A.G. Rao
	11.30 to 1.00	Production Planning, Costing Cost effectiveness by using jigs, fixtures and special tools simple jigs, split jigs	-	A.G. Rao M.S.G.Rajan Avinash
	Lunch			
	2.00 to 3.00	Practice Session on jigs, machines, tool kit		-M.S.G.Rajan Avinash Rudrapaul
	3.00 to 4.00	Product Detailing, combining with other materials, use of different finishes and colours.		-A.G.Rao
	4.00 to 5.00	Finishing with sand paper, Staining with wood stains and lacquering.	-	Avinash
<b>Day - 3</b>	8.00 to 9.00	Visit to IIT Guwahati		
	9.00 to 10.00	Introduction to Bamboo work in the Design Department	-	A.K.Das S.Nadkarni
	10.00 to 11.00	Spray Painting	-	A.K. Das
	11.00 to 1.00	Spray Painting - Practice session		-A.K. Das M.S.Sajuman
	Lunch			
	2.00 to 3.00	Back to C.B.T.C.		
	3.00 to 4.00	Discussion on tool kit, Needs of crafts persons		A.G. Rao Kamesh Salam
	4.00 to 5.00	Feed back session	-	IDC team Kamesh Salam Absar Hazarika S. Nadkarni

**Craft persons:**

1. Mr. Manish Kumar Jain,  
Pragjyotika Enterprises,  
Chhabra Bhawan,  
M.S. Road, Rly. Gate No. 4,  
Fancy Bazar,  
Guwahati-781 001.  
Dist. Kamrup, Assam.
2. Mr. Niranjan Chakraborty,  
C/o. Satyandra Chakraborty,  
P.O. South Chorilam (Karamura),  
Tripura (West).
3. Shri Dusu Chatung,  
C/o.A.D.T.H. Industrial Estate,  
Naharagum Arunachal Pradesh,  
Dist. Papum Pare,  
P.O. Naharlagum,  
Pin:791 110.
4. Shri Mimar Sora,  
C/o.A.D.T.H. Naharlagum,  
Dist. Papum Pare,  
Arunachal Pradesh,  
P.O. Naharlagum,  
Pin:791 110.
5. Mr. Biraj Shama,  
Bajer GHO,  
Vill + P.O. Dedar GHO,  
P/S Gurimuri,  
Dist. Sunip Par Assam.
6. Mr. Sudhir Mujumder,  
C/o.Surendra Ch. Majumder,  
P.O. + Vill - East Malchar,  
P/S Melaghar,  
Dist. Tripura (West), Pin:799 115.
7. Craftperson (name not noted)
  8. Mr. Mitum Kanta Singh,  
Pastoi part (I), N.C. Road,  
Imphal Manipur - B.P.O. Pastoi,  
P.O. Langjing.
  9. Shri Meisnam Tambi Singh,  
Pastoi Part (III), N.C. Road,  
B.P.O. Pastoi,  
P.O. Langjing,  
Imphal (West),  
Manipur-795 113.
  10. Mr. Moirangthem Tondon Singh,  
Laribal Sabal Liekai,  
S.P.O. Lamsang Bazar,  
Pin:795 146  
Manipur.
  11. Meghalaya 3 participants
    - i. Dhomsing Paniang,  
Umling,  
BPO Umling,  
P.O. Nangpols,  
Rikhoi Dist., Meghalaya
    - (ii) Brol Kynter,  
C/o. MHHDC Ltd.,  
'Lasrat'  
Upland Road,  
Last Umkhrols,  
Shillong - 793 802.  
Ph: 225 776.
    - (iii) Marja Kynter,  
'Roiang'  
Vocational Training Centre for the Disables,  
St. Edward's School,  
Shillong - 793 002.  
Ph: 228 471.



**Craft Instructors**

1. Mr. M.C.Das,  
R.D.T.D.C.,  
C/o. DC (H),  
Housepad Building,  
Baltala Road,  
Guwahati - 6.
2. Shri A.K. Raha,  
E.C.D.I.,  
Agartala - 799 066.
3. Shri Rajesh Kalila,  
Instructor,  
R.D.T.D.C.,  
Beltola Bashista Road,  
Guwahati - 781 028.
4. Shri Santi Ran Sharma,  
Handi Craft Project,  
Assam Govt. Marketing Corpm. Ltd.,  
Nalbari (Assam).
5. Mr. Rameshwar Das,  
C.F.C. NEHHDC Ltd.,  
Gurchur, Guwahati-35.
6. Mr. S. Jayanta Singh,  
Asst. Instructor D.T.C. (Bamboo),  
N.E.R.O.,  
Guwahati.  
(Present Address)  
  
Langthabal Mantrikhong,  
Awang Hikai - 795 003,  
Imphal - Manipur.  
(Permanent Address)

7. Mr. Makan Das,  
B.C.D.I.,  
Agartala.
8. Mr. Shaja M.S.,  
IIT-G, Guwahati.

**Entrepreneurs**

1. Mr. Bimalguri,  
Hindustan General Stores,  
Garali,  
Jorhat - 785 001.  
Tel: 320321; 323 531.
2. Mr. Satinder Singh,  
Sigma Cane Décor,  
K.K. Path, Jorhat,  
Ph: 323 297 / 328 080.
3. Mr. Pranjal Bhattacharya,  
Nature Craft, C/o. Nutria,  
Near City Heart Nursing Home,  
Rajgarh Road,  
Guwahati - 781 005.  
Tel. 0361-552664 (R),  
E-mail: Pranjalb@usa.net
4. Shrinanti Dutta,  
Home Makers,  
Basistha Road,  
Beltola,  
Guwahati - 781 028.

5. Shri Manendra Deka,  
DELA - Cane and Bamboo,  
Vill. Metrakuchi,  
P.O. Santinagar,  
Dist. Barpeta (Assam.)
6. Mr. Satyajit Barua,  
C/o.S.K. Das,  
Dhupguri, Balabitha,  
Barpeta Road, Dist. Barpeta,  
Assam (Ph.03666-62816)  
(Permanent Address)

Mr. Satyajit Barua,  
C/o. Mr. U.N. Sharma,  
Guwahati - 781 009.  
Ph: 0361 - 511 740  
(Present Address)

**Govt. Officers:**

1. Mr. Pariyat,  
Director, M.H.H.D.C.,  
Shillong.
2. Mr. Lalhuma-IAS,  
M.D., NEHHDC,  
Shillong.
3. Mr. Hatzaw,  
Regional Director,  
DD(H)'s Office.

**Workshop at Nagaland**

List of registered candidates for attending workshop in cane & bamboo

Sl.No.	Name and Address	District
1.	Shri Ghdhevi C/o Dist. Manager, NHHDC Zunhaboto	Zunhaboto
2.	Shri Huvito Sena - as above-	do - -
3.	Shri Tia Ao Mopongchukot (Mkg) C/o Dist. Manager, NHHDC Mokokchung.	Mokokchung
4.	Shri Apong Ao - as above-	do - -
5.	Shri Tiamangalang Phem CDC, NHHDC, Mangkolemba	- do -
6.	Shri Kihoylo Sama C/o CDC, Mangkolemba.	-do-
7.	Shri P.Threbse Chang Yimpang Village, C/o Dit. Manager, NHHDC Tuensang.	Tuensang
8.	Shri T.Chaangsimen-do- Chingmei Village, C/o Dist. Manager, NHHDC Tuensang.	-do-

9.	Shri Tahyim Konyak Tangnyu Village, C/o Dist.Manager, NHHDC Mon .	Mon ,
10.	Shri Tingham Konyak - Shingnha Chingnyu, C/o. Dist. Manager, NHHDC Mon .	Man
11.	Shri Zakiekedo Angami Mechanised Furniture & Handicraft Unit, Chumukedima.	Dimapur
12.	Shri Zuben Lotha Naga Exotic Society, 4th Mile, Dimapur.	-do-
13.	Shri Zacitse Sapu Diezepe Village	-do-
14.	Shri Nirmal Exclusive Cane, Dimapur	-do-
15.	Shri Yetsapemo Lotha C/o. Dist. Manager, NHHDC Wokha .	Wokha
16.	Shri Zupenthung Lotha C/o. Dist. Manager, NHHDC Wokha .	Wokha
17.	Shri Ponkgu Khiarniungan C/o CDC NHHDC Dimapur .	Dimapur
18.	Shri Phudau Phom as above	- do -
19.	Shri Longdang Phom as above	- do -

20.	Shri P. Thungo Yanthan Bethesda Youth Welfare Centre, 194 Duncan Bosti, P.B.No.33, Dimapur.	Dimapur
-----	--	---------

**Unregistered Candidates**

1.	Shri Alem Longkumer Country Craft, 7th Mile, Chumukedima.	Dimapur
2.	Shri ImLongghaba Chang Pioneer Handicraft Unit, Walford, Dimapur.	-do-
3.	Shri Huveta Tetsee C/o. Manager, NHHDC Kohima .	Kohima
4.	Shri Nuvoto as above	Kohima
5.	Shri Vikheto Yeptho Dimapur	Dimapur
6.	Hetoi Yeptho	
7.	Rokovikho Tsiepara Village, Kohima Dist.	Kohima
8.	Jongshimeren Dimapur	Dimapur

**3-day Workshop at Nalchar  
( 20th, 21st & 22nd September, 02 )**

**List of Participants:**

1.Sri Sajal Das,  
S/o Nepal Das, East Nalchar.

2.Sri Bimal Sukladas,  
S/o Lalmoan Sukladas,  
East Nalchar.

3.Smt.Jadish Das,  
W/o Subah Nama,  
East Nalchar.

4.Sri Jagadish Das,  
S/o Late Surendra Das,  
East Nalchar.

5.Sri Ranjit Das,  
S/o Debendra Das,  
East Nalchar.

6.Smt. Marani Das,  
W/o Ashu Das,  
East Nalchar.

7.Smt. Putul Nama,  
W/o Satish Nama, East Nalchar.

8.Sri Mahendra Nama,  
S/o Debendra Nama, West Nalchar.

9.Sri Anil Debnath,  
S/o Late Akshoy Debnath, East Nalchar.

10.Sri Sukhen Debnath,  
S/o Narendra Kp.Debnath, East Nalchar

11.Sri Adwaitya Debnath,  
S/o Late Chandrasagar, East Nalchar.

12.Sri Goranga Sarkar,S/o Lalmoan Sarkar,  
West Nalchar.

13.Sri Sachindra Debnath,  
S/o Late Pran Ballo Debnath, East Nalchar.

14.Sri Manindra NamaS/o Late Ramani Nama,  
East Nalchar.

15.Smt. Kajal Nama,  
W/o Kalachand Nama, West Nalchar.

16.Sri Swadesh Nama,  
S/o Late Ramesh Nama, West Nalchar.

17.Sri Ranjit Nama,  
S/o Late Rakhal Ch. Nama, West Nalchar.

18.Sri Pratip Nama,  
S/o Late Harendra Nama, West Nalchar.

19.Sri Sumangal Ch.Sukladas,  
S/o Harendra Ch. Sukladas, Bangabasa.

**2-day workshop at B.C.D.I. , Agartala  
on 18th & 19th September, 2002**

List of Craft persons/Officials  
who participated in the workshop:

Name & address of craftsmen

1. Shri Samir Ghosh,  
S/o. Shri Sadhan Ch. Ghosh,  
Vill. & PO Indranagar, Agartala, Tripura (W) .

2. Smt. Rinku Deb,  
D/o Shri Bimal Ch. Deb,  
Vill. & PO Indranagar, Agartala, Tripura (W) .

3. Smt. Jyotsna Das (Mazumdar),  
Vill. & PO Indranagar, Agartala, Tripura (W) .

4. Smt. Nandita Chakraborty,  
Vill. & PO Indranagar, Agartala, Tripura (W) .

5. Shri Manik Nama,  
S/o Sri Sadhan Nama,  
Vill. & PO South Charilam, Tripura (W) .

6. Sri Prasanta Mahali,  
S/o Sri Kamal Mahali,  
Vill. & PO Indranagar, Agartala, Tripura (W) .

7. Sri Dipak Das,  
S/o Sri Dinesh Ch. Das,  
Vill. & PO Indranagar, Agartala, Tripura (W) .

8. Smt. Kajal Rani Das,  
W/o Sri Pulin Behari Das,  
Vill. & PO Charilam, Tripura (W) .

9. Shri Sukesh Ch. Paul,  
S/o. Lt. Haridas Paul,  
Town Pratappgarh, Agartala, Tripura (W) .

10. Shri Gopal Sutradhar,  
Banamalipur, Agartala, Tripura (W) .

11. Smt. Banu Nama,  
W/o. Sri Madan Nama,  
Vill. & PO South Charilam, Tripura (W) .

12. Smt. Parul Nama,  
W/o Sri Monmohan Nama,  
Vill. & PO South Charilam, Tripura (W) .

13. Sri Anath Bandhu Sutradhar,  
M/s. Daru Shilpalaya, Town Pratappgarh,  
Agartala, Tripura (W) .

14. Smt. Sandhya Sutradhar,  
W/o Sri Sadhan Sutradhar,  
Vill. & PO Indranagar, Agartala, Tripura (W) .

15. Smt. Sadhana Sarkar,  
W/o Tapan Sarkar Dhaleswar,  
Agartala, Tripura (W) .

16. Sri Monoranjan Debbarma,  
S/o Padma Mohan Debbarma,  
Vill. Duigaria, P.O. Uttar Desh Garia, Tripura (W) .

17. Sri Sankar Rudrapaul,  
S/o Sri Raj Kumar Rudrapaul,  
Vill. & PO Nandan Nagar, Agartala, Tripura (W)

18. Sri Manoj Kr. Debnath,  
S/o Lt. Atul Ch. Debnath,  
Vill. & PO Bagabasha, Tripura (W) .

19. Smt. Nitya Rani Debnath,  
W/o Monmohan Debnath,  
Vill. & PO Charilam, Tripura (W) .

20. Sri Goutam Das,  
S/o Sri Gouranga Das,  
Vill. & PO Jogentranagar, Agartala, Tripura (W) .

21. Sri Krishnadas Paul,  
Master, Para, Agartala, Tripura (W) .

22. Sri Ranu Ch. Das,  
S/o Lt. Bholanath Das,  
Vill. Milansangha, PO A.D. Nagar, Agartala, Tripura (W)

23. Smt. Amita Debnath,  
D/o Sri Sukhlal Debnath  
Jogendranagar, Agartala, Tripura (W) .

24. Sri Dilip Nama, 32.  
O/o the DC (H), Agartala.  
Sri Dilip Nama,  
S/o Sri Manindra Nama,  
Jogendranagar, Agartala, Tripura (W) .

25. Smt. Bhanu Nama,  
D/o Sachindra Nama,  
Jogendranagar, Agartala, Tripura (W) .

26. Sri Partha Sarathi Dutta,  
C/o Ramesh Chaudhuri  
Raha Kishorepur, Tripura (W) .

**Participants from B.C.D.I. & M.S.E.C. ,  
Agartala:**

27. Shri S.R. Masram,  
Officer-in-charge, BCDI, O/o the DC (H) ,  
Khejurbagan, Kunjaban, Agartala.
28. Shri A.K. Raha,  
Tech. Supervisor, BCDI, O/o the DC (H) , Agartala.
29. Shri Makhan Ch. Das,  
Master Craftsman, BCDI, O/o the DC (H) , Agartala.
30. Shri Rabindra Debnath,  
BCDI, O/o the DC (H) , Agartala.
31. Smt. Sachi Karmakar,  
Instructor, BCDI, O/o the DC (H) , Agartala.
32. Smt. Bina Debnath, Instructor, BCDI,  
O/o the DC (H) , Agartala.
33. Shri A.K. Das,  
Investigator, M&SEC, O/o the DC (H) , Agartala.

**Workshop at IDC**

**List of Participants from Bangalore & Nagaland**

- :
1. Mr. B.P. Ramachandra,  
R.T.D.C., 32, Victoria Road,  
Bangalore - 560 047.
2. Mr. Puttaswamachar,  
R.T.D.C., 32, Victoria Road,  
Bangalore - 560 047.
3. Mr. Alem Longkumer,  
Country Craft, 7th Mile,  
Chomukedmir, Dimapur,  
Nagaland.
4. Mr. Ase Chuzho,  
Diezhheche Craft Society,  
Dimapur, Nagaland.
5. Mr. Z. Sapu,  
Diezhheche Craft Society,  
Dimapur, Nagaland.
6. Mr. Arun C. Das,  
Post & village Narchar (E) ,  
O/o.DC (H) , Tripura.
7. Mr. Dilip Das,  
Post & Vill. Nalchar (E) ,  
Police Station Melaghar,  
Tripura (W) .
8. Mr. Zuben Lotha,  
Naga Exotic Society, 4th Mile,  
Dimapur, Nagaland.

**7-day workshop held at IDC, IIT-B from 3 - 9th  
September, 2002**

Participants from Nagaland & Barapeta:

1. Mr. T. Yanger Sor,  
P.O. No.13,  
Mokokchung, Nagaland.
2. Mr. S.P. Purch,  
Diezhheche village,  
Dimapur, Nagaland.
3. Mr. Vepfuto,  
Diezhheche village,  
Dimapur, Nagaland.
4. Mr. Kaidinpilak,  
Samzuriram village,  
Jalukie, Nagaland.
5. Mr. Mehbool Hussein,  
Saptashree Handicrafts,  
Barapeta.
6. Mr. Samad Ali,  
Saptashree Handicrafts,  
Barapeta.